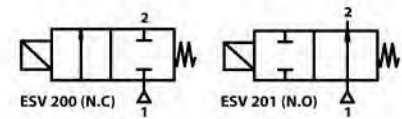


TECHNICAL SPECIFICATIONS, DESCRIPTIONS and GENERAL FEATURES

- **Fluids:** Valves are suitable for steam, over heated water and non aggressive liquids
- **Switching Function:** Normally Closed (N.C, Closed when de-energised) (ESV 200 Series) and Normally Open (N.O, Open when de-energised) (ESV 201 Series)
- **Principle of Operation:** Direct Operated
- **Way Number:** 2/2 (Ports / Positions)
- **Connection and Port Sizes:** G1/8" and G1/4"
- **Connection Type:** Thread (Female), G (BSPP / ISO 228-1)
- **Pressure Range:** 5 Bar
- **Fluid Temperature:** -10°C to max. 160°C
- **Ambient Temperature:** -20°C to max. 70°C
- **Opening Time:** 25 ms
- **Closing Time:** 25 ms
- **Max Viscosity:** 38 cSt or mm²/s
- **Maximum Allowable Pressure or Design Pressure:** 8 Bar
- Don't require differential pressure, internal exhaust system (for ESV 201 Series)
- Compact design
- Valve has sealing o-rings
- Suitable AC and DC voltage, high voltage tolerance
- Coil interchangeable without dismantling the valve (don't matter AC or DC)
- Low flow loss, low power loss
- Various flow rate options, wide range of pressure ratings, wide range of orifice options
- Mounting position, optional any position but preferably solenoid coil vertical on top
- The fluid passing through the valve must be filtered
- Flow rate (Q) can be usually calculated as a function of pressure, density and flow coefficient
- According 97/23/EC Pressure Equipment Directive (PED), 2006/95/EEC Low Voltage Directive (LVD) and 2004/108/EC Electromagnetic Compatibility Directive (EMC)



| | | | |
|-------------------|-------------------------------------|--------------------------|-----------------|
| Low Pressure Loss | Don't Require Differential Pressure | Coil Rotatable 360° | Small Body Size |
| Low Weight | Patented Enclosing Tube Design | Fast Opening and Closing | Long Life |



| Model No | Position | Connection and Port Size | Orifice Size | Flow Factor / Coefficient Kv | | Operating Pressure Differential | | | | Fluid Temperature | | Seal | Approximate Weight | Reference Figure |
|----------------|----------|--------------------------|--------------|------------------------------|-------------------|---------------------------------|---------------|---------------|---------------|-------------------|---------|-------|--------------------|------------------|
| | | | | | | Min. (For AC) | Min. (For DC) | Max. (For AC) | Max. (For DC) | Min. °C | Max. °C | | | |
| ESV | | G | mm | L / m | m ³ /h | Bar | Bar | Bar | Bar | °C | °C | | kg | |
| ESV 200.00.018 | N.C | 1/8" | 1.8 | 1.7 | 0.10 | 0 | 0 | 5 | 5 | -10 | 160 | VITON | 0.35 | Fig.1 |
| ESV 200.00.025 | N.C | 1/8" | 2.5 | 3.3 | 0.19 | 0 | 0 | 5 | 5 | -10 | 160 | VITON | 0.35 | Fig.1 |
| ESV 200.00.030 | N.C | 1/8" | 3 | 4.5 | 0.27 | 0 | 0 | 5 | 5 | -10 | 160 | VITON | 0.35 | Fig.1 |
| ESV 200.00.040 | N.C | 1/8" | 4 | 6.5 | 0.39 | 0 | 0 | 5 | 5 | -10 | 160 | VITON | 0.35 | Fig.1 |
| ESV 200.00.045 | N.C | 1/8" | 4.5 | 7.7 | 0.46 | 0 | 0 | 5 | 5 | -10 | 160 | VITON | 0.35 | Fig.1 |
| ESV 200.00.050 | N.C | 1/8" | 5 | 9.5 | 0.57 | 0 | 0 | 5 | 5 | -10 | 160 | VITON | 0.35 | Fig.1 |
| ESV 200.00.060 | N.C | 1/8" | 6 | 11.5 | 0.69 | 0 | 0 | 5 | 5 | -10 | 160 | VITON | 0.35 | Fig.1 |
| ESV 200.01.018 | N.C | 1/4" | 1.8 | 1.7 | 0.10 | 0 | 0 | 5 | 5 | -10 | 160 | VITON | 0.33 | Fig.1 |
| ESV 200.01.025 | N.C | 1/4" | 2.5 | 3.3 | 0.19 | 0 | 0 | 5 | 5 | -10 | 160 | VITON | 0.33 | Fig.1 |
| ESV 200.01.030 | N.C | 1/4" | 3 | 4.5 | 0.27 | 0 | 0 | 5 | 5 | -10 | 160 | VITON | 0.33 | Fig.1 |
| ESV 200.01.040 | N.C | 1/4" | 4 | 6.5 | 0.39 | 0 | 0 | 5 | 5 | -10 | 160 | VITON | 0.33 | Fig.1 |
| ESV 200.01.045 | N.C | 1/4" | 4.5 | 7.7 | 0.46 | 0 | 0 | 5 | 5 | -10 | 160 | VITON | 0.33 | Fig.1 |
| ESV 200.01.050 | N.C | 1/4" | 5 | 9.5 | 0.57 | 0 | 0 | 5 | 5 | -10 | 160 | VITON | 0.33 | Fig.1 |
| ESV 200.01.060 | N.C | 1/4" | 6 | 11.5 | 0.69 | 0 | 0 | 5 | 5 | -10 | 160 | VITON | 0.33 | Fig.1 |
| ESV 201.00.018 | N.O | 1/8" | 1.8 | 1.7 | 0.10 | 0 | 0 | 5 | 5 | -10 | 160 | VITON | 0.38 | Fig.1 |
| ESV 201.00.025 | N.O | 1/8" | 2.5 | 3.3 | 0.19 | 0 | 0 | 5 | 5 | -10 | 160 | VITON | 0.38 | Fig.1 |
| ESV 201.00.030 | N.O | 1/8" | 3 | 4.5 | 0.27 | 0 | 0 | 5 | 5 | -10 | 160 | VITON | 0.38 | Fig.1 |
| ESV 201.01.018 | N.O | 1/4" | 1.8 | 1.7 | 0.10 | 0 | 0 | 5 | 5 | -10 | 160 | VITON | 0.36 | Fig.1 |
| ESV 201.01.025 | N.O | 1/4" | 2.5 | 3.3 | 0.19 | 0 | 0 | 5 | 5 | -10 | 160 | VITON | 0.36 | Fig.1 |
| ESV 201.01.030 | N.O | 1/4" | 3 | 4.5 | 0.27 | 0 | 0 | 5 | 5 | -10 | 160 | VITON | 0.36 | Fig.1 |

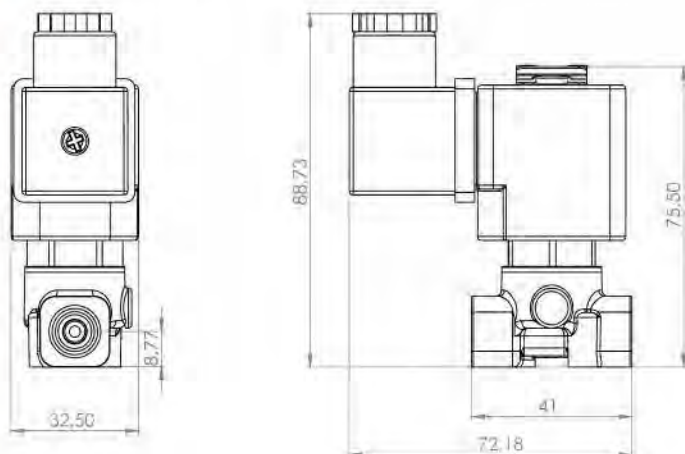
OPTIONS

- Custom options can be performed for customer's special requests
- On request; NPT (ANSI 1.20.3), R (BSPT / ISO 7-1), W (BSW / Whitworth), M (Metric) etc...
- On request; diaphragm or sealing or o-rings can be EPDM (-10°C to 140°C)
- On request; various body surface coating, nickel plated body, different body materials, internal parts stainless steel (for ESV 201), manual override, seat can be stainless steel, filter, other pipe connections, cooling neck (to protect the coil against temperature), 2 mounting sub-base holes at the bottom of the body
- On request; other special supply voltages, frequencies (60 Hz), other power, coil insulation class : F (155°C), coil duty latching model
- On request; with electronic timer , Explosion-Proof coil for use in zones 1/21-2/22 (Ex em II T4/T5), coil encapsulation material can be fiber glass reinforced (V0 or V1)
- On request; connector with LED or without connector, connector with visual indication and peak voltage suppression, connector with cable length of 2m, Spade plug (Cable Ø 8-10 mm), connector non-flammable
- On request other versions

POWER CONSUMPTION

| Power Consumption | | | | | | | |
|--------------------------|---------|-------------|--------------|---------------------|---------|----------|---------|
| Alternating Current (AC) | | | | Direct Current (DC) | | | |
| Model No | Voltage | Inrush (VA) | Holding (VA) | Model No | Voltage | Cold (W) | Hot (W) |
| ECO 10.AC.012 | 12V | 30 | 18 | ECO 10.DC.012 | 12V | 16 | 12 |
| ECO 10.AC.024 | 24V | 30 | 18 | ECO 10.DC.024 | 24V | 16 | 12 |
| ECO 10.AC.048 | 48V | 30 | 18 | ECO 10.DC.048 | 48V | 16 | 12 |
| ECO 10.AC.110 | 110V | 30 | 18 | ECO 10.DC.110 | 110V | 16 | 12 |
| ECO 10.AC.230 | 230V | 30 | 18 | ECO 10.DC.230 | 230V | 16 | 12 |

DIMENSIONS (mm)



ELECTRICAL CHARACTERISTICS

- **Protection Degree:** IP 65 (EN 60529) (with connector)
- **Plug Connection:** DIN 46340-3 poles connectors (DIN 43650)
- **Connector Specification:** ISO 4400 / EN 175301-803 . Form A, Spade plug (Cable Ø 6-8 mm)
- **Electrical Safety:** IEC 335, EN 60335-1, EN 60204-1
- **Coil Insulation Class:** H (180°C)
- **Coil Impregnation:** Polyester Fiber-Resin Glass
- **Coil Encapsulation Material:** Fiber Glass Reinforced (V2)
- **Supply Voltages:** For AC (-) 12V , 24V , 48V , 110V , 230V
For DC (=) 12V , 24V , 48V , 110 V , 230 V
- **Voltage Tolerances:** For AC (-) or DC (=) %-10 ; %+10
- **Frequency:** 50 Hz
- **Coil Duty Cycle:** %100 ED, Continuously Rated
- Design according to DIN VDE 0580

MATERIALS

- **Body:** Brass
- **Plunger Seal:** VITON
- **Enclosing Tube:** Stainless Steel (AISI 430FR and AISI 304) for ESV 200 Series , Stainless Steel (AISI 430FR and AISI 304) and Brass for ESV 201 Series
- **Plunger:** Stainless Steel (AISI 430FR)
- **Springs:** Stainless Steel (AISI 302)
- **Shading Ring:** Copper
- **Seat:** Brass
- **O-rings:** NBR
- **Internal Metal Parts:** Stainless Steel and Brass

