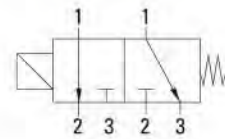


TECHNICAL SPECIFICATIONS, DESCRIPTIONS and GENERAL FEATURES

- **Fluids:** Valves are suitable for water, low viscosity oils etc... non-aggressive liquids and Air, Inert Gas etc... gaseous but is not suitable for hazardous fluids
- **Switching Function:** Normally Closed (N.C, Closed when de-energised)
- **Principle of Operation:** Direct Operated
- **Way Number:** 3/2 (Ports / Positions)
- **Connection and Port Sizes:** G1/8" and G1/4"
- **Connection Type:** Thread (Female), G (BSPP / ISO 228-1)
- **Pressure Range:** 0 -16 Bar
- **Fluid Temperature:** -10°C to max. 160°C
- **Ambient Temperature:** -20°C to max. 70°C
- **Opening Time:** 25 ms
- **Closing Time:** 25 ms
- **Max Viscosity:** 38 cSt or mm2/s
- **Maximum Allowable Pressure or Design Pressure:** 24 bar
- Don't require differential pressure
- Compact design
- Valve has sealing o-rings
- Suitable AC and DC voltage, high voltage tolerance
- Coil interchangeable without dismantling the valve (don't matter AC or DC)
- Low flow loss, low power loss
- Mounting position, optional any position but preferably solenoid coil vertical on top
- The fluid passing through the valve must be filtered
- Flow rate (Q) can be usually calculated as a function of pressure, density and flow coefficient
- According 97/23/EC Pressure Equipment Directive (PED), 2006/95/EEC Low Voltage Directive (LVD) and 2004/108/EC Electromagnetic Compatibility Directive (EMC)



1: Inlet
 2: Outlet (Body)
 3: Outlet (Enclosing Tube)
 De-energised: 1-3
 Energised: 1-2

ESV 506 (3/2,N.C)



Low Pressure Loss	Don't Require Differential Pressure	Coil Rotatable 360°	Small Body Size
Low Weight	Patented Enclosing Tube Design	Fast Opening and Closing	Long Life

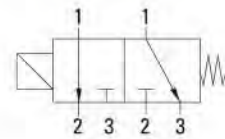


09-09
ESV 506

Model No	Position	Connection and Port Size	Drift Size	Flow Factor / Coefficient Kv	Operating Pressure Differential				Fluid Temperature		Seal	Approximate Weight	Reference Figure	
					Min. (For AC)	Min. (For DC)	Max. (For AC)	Max. (For DC)	Min. °C	Max. °C				
ESV		G	mm	L/m m ³ /h	Bar	Bar	Bar	Bar	°C	°C		kg		
ESV 506.00.010	N.C	1/8"	1	"1-2:0,5 2-3:1,4"	"1-2:0,03 2-3:0,08"	0	0	16	16	-10	160	VITON	0.4	Fig.1
ESV 506.00.018	N.C	1/8"	1.8	"1-2:1,7 2-3:1,4"	"1-2:0,1 2-3:0,08"	0	0	10	10	-10	160	VITON	0.4	Fig.1
ESV 506.00.025	N.C	1/8"	2.5	"1-2:3,3 2-3:1,4"	"1-2:0,19 2-3:0,08"	0	0	6	6	-10	160	VITON	0.4	Fig.1
ESV 506.01.010	N.C	1/4"	1	"1-2:0,5 2-3:1,4"	"1-2:0,03 2-3:0,08"	0	0	16	16	-10	160	VITON	0.38	Fig.1
ESV 506.01.018	N.C	1/4"	1.8	"1-2:1,7 2-3:1,4"	"1-2:0,1 2-3:0,08"	0	0	10	10	-10	160	VITON	0.38	Fig.1
ESV 506.01.025	N.C	1/4"	2.5	"1-2:3,3 2-3:1,4"	"1-2:0,19 2-3:0,08"	0	0	6	6	-10	160	VITON	0.38	Fig.1

TECHNICAL SPECIFICATIONS, DESCRIPTIONS and GENERAL FEATURES

- **Fluids:** Valves are suitable for water, low viscosity oils etc... non-aggressive liquids and Air, Inert Gas etc... gaseous but is not suitable for hazardous fluids
- **Switching Function:** Normally Closed (N.C, Closed when de-energised)
- **Principle of Operation:** Direct Operated
- **Way Number:** 3/2 (Ports / Positions)
- **Connection and Port Sizes:** G1/8" and G1/4"
- **Connection Type:** Thread (Female), G (BSPP / ISO 228-1)
- **Pressure Range:** 0 -16 Bar
- **Fluid Temperature:** -10°C to max. 160°C
- **Ambient Temperature:** -20°C to max. 70°C
- **Opening Time:** 25 ms
- **Closing Time:** 25 ms
- **Max Viscosity:** 38 cSt or mm²/s
- **Maximum Allowable Pressure or Design Pressure:** 24 bar
- Don't require differential pressure
- Compact design
- Valve has sealing o-rings
- Suitable AC and DC voltage, high voltage tolerance
- Coil interchangeable without dismantling the valve (don't matter AC or DC)
- Low flow loss, low power loss
- Mounting position, optional any position but preferably solenoid coil vertical on top
- The fluid passing through the valve must be filtered
- Flow rate (Q) can be usually calculated as a function of pressure, density and flow coefficient
- According 97/23/EC Pressure Equipment Directive (PED), 2006/95/EEC Low Voltage Directive (LVD) and 2004/108/EC Electromagnetic Compatibility Directive (EMC)



1: Inlet
 2: Outlet (Body)
 3: Outlet (Enclosing Tube)
 De-energised: 1-3
 Energised: 1-2

ESV 506 (3/2,N.C)



Low Pressure Loss	Don't Require Differential Pressure	Coil Rotatable 360°	Small Body Size
Low Weight	Patented Enclosing Tube Design	Fast Opening and Closing	Long Life



09-09
ESV 506

Model No	Position	Connection and Port Size	Drift Size	Flow Factor / Coefficient Kv	Operating Pressure Differential				Fluid Temperature		Seal	Approximate Weight	Reference Figure	
					Min. (For AC)	Min. (For DC)	Max. (For AC)	Max. (For DC)	Min. °C	Max. °C				
ESV		G	mm	L/m m ³ /h	Bar	Bar	Bar	Bar	°C	°C		kg		
ESV 506.00.010	N.C	1/8"	1	"1-2:0,5 2-3:1,4"	"1-2:0,03 2-3:0,08"	0	0	16	16	-10	160	VITON	0.4	Fig.1
ESV 506.00.018	N.C	1/8"	1.8	"1-2:1,7 2-3:1,4"	"1-2:0,1 2-3:0,08"	0	0	10	10	-10	160	VITON	0.4	Fig.1
ESV 506.00.025	N.C	1/8"	2.5	"1-2:3,3 2-3:1,4"	"1-2:0,19 2-3:0,08"	0	0	6	6	-10	160	VITON	0.4	Fig.1
ESV 506.01.010	N.C	1/4"	1	"1-2:0,5 2-3:1,4"	"1-2:0,03 2-3:0,08"	0	0	16	16	-10	160	VITON	0.38	Fig.1
ESV 506.01.018	N.C	1/4"	1.8	"1-2:1,7 2-3:1,4"	"1-2:0,1 2-3:0,08"	0	0	10	10	-10	160	VITON	0.38	Fig.1
ESV 506.01.025	N.C	1/4"	2.5	"1-2:3,3 2-3:1,4"	"1-2:0,19 2-3:0,08"	0	0	6	6	-10	160	VITON	0.38	Fig.1